

November 2023

S+ Mary's Church Wexham

Parish News



Price 50p

PARISH DIRECTORY

Rector:

Revd Andrew Parry 07972 142 073
rector@stmaryswexham.co.uk

Curate

Revd Tracey Jones (TJ) 07939
536879
Rev.funkyfish@gmail.com

Licensed Lay Minister:

Mrs J Bell 07812741279
jillbell123@hotmail.co.uk

Churchwarden:

Miss V Clayton
vikkyjclayton@gmail.com
Mrs S U Edwards
susan.edwards@btinternet.com

PCC Treasurer:

Mr B Edwards

PCC Secretary: vacant

Parish Magazine Editorial Team:

Rev'd Chris Collinge
Mrs Jill Bell

NORMAL SUNDAY SERVICES

See Calendar page opposite for details.

8.00 am—Holy Communion - Common
Worship Traditional Language (said)
10.00 am— Holy Communion - Common
Worship Contemporary Language

YOUNG CHURCH AND CRECHE:

10.00 am in the Church Hall
Leader: Mrs S Horth.

DIRECT GIVING:

If you would like information on our Direct
scheme, or Gift Aid, please contact
Mr B Edwards

CHURCH FLOWERS:

For Wedding flowers and arrangements
for special occasions, please contact Mrs
J Boot

ORGANISATIONS

MEN'S FELLOWSHIP meets for a meal
and discussion on the last Thursday in
each month.
Contact Paul Horth—

BINGO CLUB: Mondays at 8.00 pm

Contacts:

Mrs L Shelley Mrs C Donaldson

BROWNIES Thursdays 6.30 pm - 8.00
pm

Leader: Tracey Hassell

FRIENDS OF ST MARY'S:

Contacts:

Mrs L Shelley Mrs C Donaldson

WEXHAM COURT PARISH COUNCIL:

(Slough, Berks, part of St Mary's Parish)

Clerk to the Council Adil Iftakhar 07803
208 556

[adil.iftakhar@wexhamcourtparishcouncil.g
ov.uk](mailto:adil.iftakhar@wexhamcourtparishcouncil.gov.uk)

WEXHAM PARISH COUNCIL:

*(Wexham and George Green, Bucks, part
of St Mary's Parish)*

Clerk to the Council: Mrs Angela Galvin
01753 644887

CHURCH WEBSITE

www.stmaryswexham.co.uk

WHAT THREE WORDS. For those who
don't know this scheme it provides the
Emergency Services with your precise lo-
cation and the words to be used for the
Church Door are **chew.blaze.hunt** and for
the Entrance to the Church Hall: /
packet.hook.shunts

*The PCC and the editorial team reserves the right
to edit and shorten submitted material.*

*Advertisers in the magazine are not necessarily
known to the editorial team and the appearance of
an advert does not carry an implied endorsement.*

St Mary's is an Anglican parish church which seeks to proclaim the Christian faith by
sharing the love of Christ with those who enter its buildings and with all who live within
the communities of Wexham and George Green.

CALENDAR NOVEMBER

Tea and coffee are served after the 10 am service in the church hall You can sign up for the Mailchimp on our website www.stmaryswexham.co.uk and then you will get notifications of the services and details of any alterations to our programme

5th November Fourth Sunday before Advent

8.00 am Holy Communion service in Church
10.00 am Holy Communion service in Church
10.00 am Young Church in hall.

8th November Wednesday

10.30 am Home Communion at The Pines

11th November Remembrance Day

Remembrance Service at The Pines for residents

12th November Remembrance Sunday

8.00 am Holy Communion Service in Church
10.00 am Holy Communion Service in Church followed by Act of Remembrance outside church at 11 am
10.00 am Young Church

10.30 am Remembrance Service outside Harvey Hall George Green.



14th November Tuesday

8.00 pm PCC Meeting

19th November Second Sunday before Advent

8.00 am Holy Communion service in Church
10.00 am Holy Communion service in Church
10.00 am Young Church in hall.

22nd November Wednesday

10.30 am Morning Praise Service at the Pines for residents

23rd November Thursday

10.30 am Service at Oak House for residents

25th November Saturday

10.30 am The Community Hub for all ages to meet chat and have refreshments

26th November Sunday next before Advent

10.00 am Holy Communion
10.00 am Young Church in Hall
11.30 Healing Service in Church.

29th November Wednesday

pm Home Communion

DEADLINE FOR THE DECEMBER/JANUARY PARISH MAGAZINE:

Material for this Parish Magazine must be with the Editorial Team by 19th November Magazines will be available from Friday, 1st December

RECTOR'S RAMBLES



St Marys Churchyard

There is something particular about the churchyards of many English parishes. They are not closed off. Although there are fences, there are no closed gates. The yew tree, the old graves, the established trees all give a unique feel to the churchyard.

And this delightful ambience in the churchyard does not just happen. A lot of work goes into maintaining it - all by volunteers. We have fairly regular churchyard care sessions where, for a couple of hours, a lot of people get together and tackle some big pieces of work. Some also work in the churchyard during the week.

Our churchyard is well-used. When I am in the church during the week I will often meet people sitting in the churchyard, walking their dogs in the churchyard. Also I often see people tending the graves of their family members.

People often speak of “their” plot but there is no ownership of plots, there is permission to use the plot for a specific period. All items introduced into the churchyard require permission and once introduced, become the property of the parish.

There are detailed rules governing the churchyard. Did you know, for example:

- Once an ornament or memorial is introduced into the churchyard, it may not be removed without my written permission?
- If an item has been in the churchyard for longer than 50 years, I cannot grant permission, application has to be made to the Archdeacon.

You will see some of the rules in the notices on each gate leading into the churchyard. While some of the rules might sound officious, they are not made up by us, they are issued by the central church.

Why do we have the rules? To help ensure that the churchyard retains that ambience, the ambience it has had for over 1,000 years, that it remains a living churchyard, with many people coming and going and all feeling welcome.

So, thank you to all who volunteer, all who visit, all who make this churchyard what it is.

Andrew



November 5th



This Sunday we will hear the story of The Happy Puppy and have a sing song time. We will talk about how God wants us to look to him for help. We will play Hide the puppy and make a Blessing collage.

November 12th

Today is Remembrance Sunday. We will start of in church for the first hymn, then the children will come to the hall for a story about Remembrance Sunday and make a Poppy flower pot and individual poppies to place in it when we re join the congregation out side the church for the 2min silence. There will be play and refreshments in the hall after this.



November 19th



This Sunday we will talk about our different talents and how good it is to use them. Story time will include a box with surprises in it. We will do some baking and decorate a talent/ gift box.

November 26th

Today is Christ the king Sunday. The story will be about Jesus coming to be a king. We will talk about Kings and what kind of King Jesus was. We will play the hat race game and make crowns



Sandra Horth

PUZZLE FROM DAVID MACISAAC

ANSWERS TO OCTOBER PUZZLES

Murder Mystery 1

If you read again the inspector has to open every window to throw the coin out so that means it can't be sucked or an accident as she couldn't shut the window after she fell.



Murder Mystery 2

It must be the Maths teacher. September the 4th is the start of the school term so he wouldn't be giving an end of term test and, in any case, there are no actual students in the building at the time so one to give a test to!

Bible Question

He was 12 when presented to the Temple and 30 when he embarked on ministry. It is not recorded how old he was when crucified but many writers believe he did everything in the same year.

NOVEMBER PUZZLES

Antonym is a word that means the opposite of another word
e.g The Future is Coming is the opposite of The Past is Gone

See if you can work out these antonyms for famous songs The initials of the original singers are given in brackets

1. Rocking Out The Shallow (A)
2. It's Yesterday or Forever (EP)
3. Running Forward to Misery (HS)
4. We Will Never See Each Other Anymore (VL)
5. Tomorrow (TB)
6. Depression(KD)
7. Procrastination Down (BF)
8. Boys don't want Boredom (CL)
9. Flourishing Lows (KB)
10. Sliver Toe (SB)



Good Luck!

Community Hub



Saturday 25th November

Join us in the Church Hall for a good chat
and delicious refreshments. 10.30 to
12.30. All welcome

Remembrance

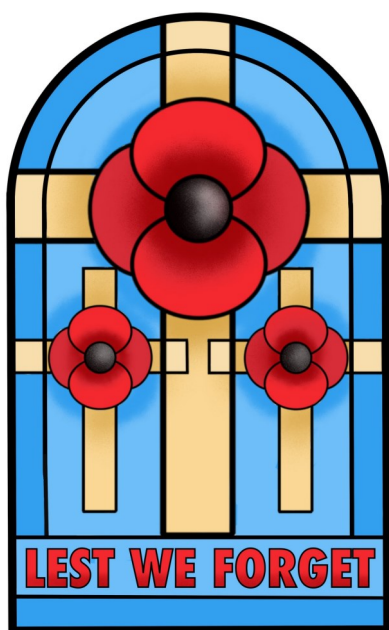
We have our usual Remembrance Services
this year

On **11th November Remembrance Day** we are at The Pines for a service for the residents:

On **12th November Remembrance Sunday** we have the church service when Young Church will join us at the beginning before they go off to make some poppies and a poppy flower pot, then they will rejoin us for the Act of Remembrance at 11am.

Meanwhile also on **12th November** at 10.30 we will have the Remembrance Service at George Green, outside Harvey Hall when the names on the war memorial will be read out

and poppy crosses placed, before we observe the two minutes silence at 11 am.



THINGS TO DO IN NOVEMBER

EVERY MONDAY EVENING.

Friends of St Mary's hosts Bin-go in the Church Hall 7.30 for 8pm prompt start.

It's a great way to meet people and have a social get together and a warm welcome is guaranteed .



SATURDAY 18TH NOVEMBER

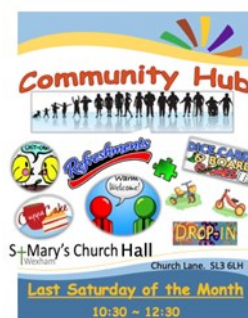
from 2pm—3.30pm **George Green Social Library**

George Green Social Library at Harvey Memorial Hall George Green Road SL3 6BJ. Come along to browse the books, magazines, jigsaws, DVDs and have a chat whilst enjoying tea/coffee and maybe home made cake.



SATURDAY 25TH NOVEMBER 10.30 am

Our Community Hub at St Mary's Church Hall has proved popular. Our visitors really enjoyed meeting up with people they hadn't seen for ages. It's a place to meet new people, have tea, coffee and cake and for children to play. There are tabletop games for adults and children. The Hub is for all ages young and old.



FRIDAY 19TH JANUARY 2024

ONLY A FEW TICKETS LEFT

FRIENDS OF ST MARY'S QUIZ NIGHT

Doors open 7.30 pm

Bring your own drinks and glasses.

Tickets include a Ploughmans and cost £8.

To secure a place contact Lynnette on 01753 771834



REMEMBER REMEMBER THE FIFTH OF NOVEMBER.

As a child growing up in Yorkshire, Bonfire Night was always exciting. For weeks beforehand, youngsters would collect old clothes and make a guy. Some would stand out on street corners shouting "Penny for the Guy!". Most years we went to another family's house for bonfire night, because they had a big garden and could have a bonfire. Mum would make toffee apples and parkin, Dad (who was a butcher) would make the sausages and we'd have jacket potatoes cooked in the fire. There would be games, fireworks and the high point of the evening was putting the guy on the fire.

When our children were born we didn't have a garden big enough for a bonfire but we could have fireworks. The children didn't like toffee apples but John enjoyed the parkin and we would have hot dogs and burgers. The bonfire became a bonflake cake, a chocolate and orange cake cooked in a pudding basin to give it its shape and decorated with flame coloured butter icing and Cadbury flakes for the logs.

This year at St Mary's we are remembering the fifth of November in our Murder Mystery evening on 3rd November. We will have our own Guy Fawkes and tell the story of the Gunpowder Plot. It's been fun preparing for this and working with a great group of volunteers who have really entered into the spirit of the event. I've been blown away by their enthusiasm, especially those who have worked behind the scenes to get the production ready. Jane and Jacinta have done loads of research for the design of the costumes to really reflect the period of James I's reign and have, with the help of family members, made some fantastic outfits. Jacinta's husband Charlie even made the large buckles for the shoes from aluminium. Gill Knight has surprised all of us with the props she's been able to source, including a most amazing depiction of the barrels, a Guy Fawkes lantern which she made herself (see picture) and a powder horn so Guy can lay the fuse trail to light the gunpowder.



We have had lots of fun at the rehearsals, working out how to stage our little play and have been able to involve many people who haven't done this sort of thing before or in a couple of cases for many years. John Higgins is coming to help us with the sound system so we can all hear.

Catering for 80 people is not easy but again it has been a joint effort led by Yvette with support from Sue in producing cold platters. Karen and I are making the bonflake cakes which will have a ceremonial lighting. Sandra is supplying fresh fruit platters as an alternative to cake. Donations to the raffle have been wonderful and we are hoping to raise plenty of money to help pay for the new lighting in the hall but most of all we hope that it will be a great night for everyone who comes along.

Jill Bell

EARLY CHURCH LIFE CONTINUED...

In last month's article about the Early Church in England, we read about the development of the priesthood and the establishment of village churches, under the established Roman Church.

Wexham church was simply built as a rectangular building, divided into two by a Rood screen, to provide a nave, and the chancel and sanctuary for the priest's activities.

The church would have been quite dark inside. There were only a few candles for lighting, as there were only small open, unglazed windows. The walls were painted vividly with scenes from the Bible, to enable some learning of the Christian faith. Scenes from the Last Judgement – Heaven and Hell – were popular, with lots of flames and demons with pitch forks!

The nave floor was covered in flagstones, later a wooden floor installed. There was no pulpit, as there were mostly no sermons, but this depended upon the ability of the priest. If he could read, he might read, in Latin, an extract from a Book of Prayers (hand produced books). He might lead the congregation in reciting memorised Psalms and Canticles. As he probably only knew two or three, this became very repetitive.

Some psalms might be sung, if the priest was attached to a monastery or priory. But these were all learnt by rote. There were no choirs or church music as such; no organs or musical instruments until the mid 1500s. There were a number of dramatic and symbolic

religious ceremonies throughout the year (mainly inherited from the early Celtic Christian practices).

These were popular and "hands on" with the ordinary people, rather than instruction and Latin words.

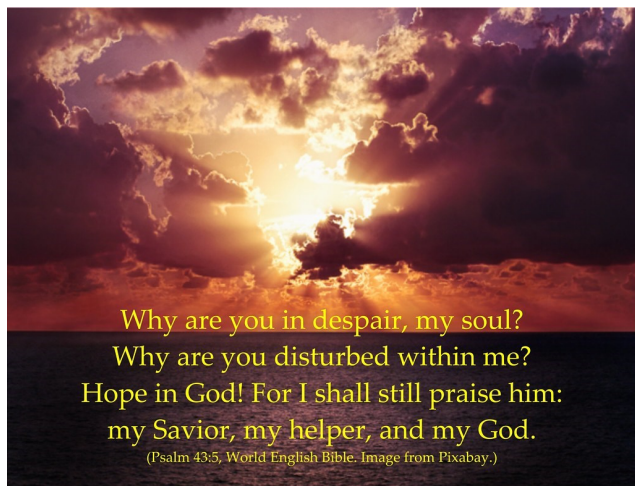


There was the blessing of candles at Candlemas, commemorating the purification of the Virgin and Christ's presentation in the Temple; the imposition of ashes on Ash Wednesday, the beginning of Lent;



the blessing of the palms on Palm Sunday; and beating the Parish bounds for Rogationtide.

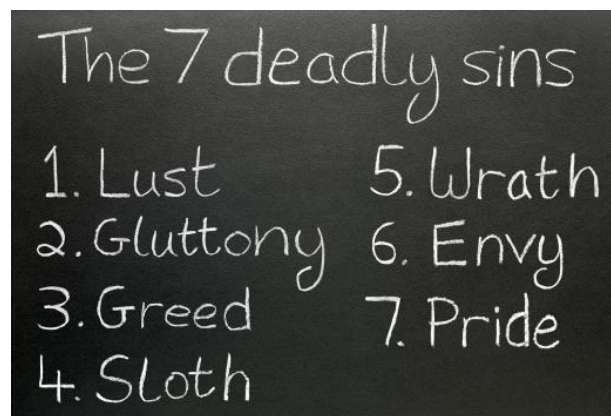
Most people would be able to recite the Creed and the Lord's Prayer. They would know the recitation of Psalm 43 by the priest, as a prelude to confession and absolution.



The Lateran Council in Rome had announced in 1215, that the laity should be educated in the faith. In England, the Council of Lambeth in 1281 defined that the laity should have knowledge of The Ten Commandments, the Seven Works of Mercy,

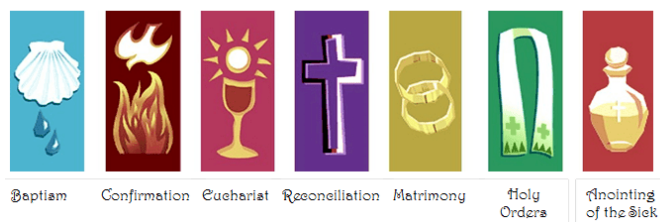
- to feed the hungry,
- to give drink to the thirsty,
- to clothe the naked,
- to give shelter to travellers,
- to visit the sick,
- to visit the imprisoned, and
- to bury the dead.

the Seven Virtues,



the Seven Deadly Sins, and the Seven Sacraments.

The Sacraments



This agenda provided much material for the priest to lead and instruct his flock. But there was no set service pattern and no service sheets – few could read anyway!

Therefore, with a varying mixture of the above elements, the people attended the service, which sometimes lasted three hours (people tended to come and go, as in Eastern Orthodox Churches today). The highlight was of course the mystery of the mass...and people (if baptised into the Church), were allowed “the bread” once a year at Easter. If wine was supplied to wash down the host, it was un-consecrated, but to ordinary people it was a special moment. Next time, I hope to explain how further changes in building and services developed over the years until the early 1500s.

GJB

LONELINESS

Some months ago I read a story on Facebook from Harriet's Home and Garden and it has stuck with me.

It told of a daughter who had spent an hour in the bank with her father, as he needed to transfer some money. She'd suggested to him that he should try internet banking. Her father was surprised at the suggestion and asked "Why?" She patiently explained that he wouldn't need to spend an hour in the bank and added he could also do his shopping on line as well. Everything would be much easier.

His response astounded her. He said while we've been out I have met four friends and I've chatted with the staff who know me very well. You know that I am alone now and this is the company I need. I enjoy getting ready to come to the bank. I have more than enough time, it's the physical touch I need. If I did everything on line would I have that human touch? . I like to know the person I am dealing with and not just the "seller" It creates bonds and relationships and keeps me active.

He offered her some advice. Technology isn't life and if we let it be, life as it is now, will be gone. Don't shop saying you have no time to shop local because local to some is all that they have. Spend time with people, not with devices and on-line. A sunny day and a walk out is sometimes all the medicine you need.

Britain is in the midst of a loneliness epidemic. A survey by the Jo Cox Commission in 2017 revealed that nine million of us in the UK are affected by it. Loneliness hurts you physically as well as mentally. It has even been said that it can be as bad for your health as smoking 15 cigarettes a day. It can raise blood pressure, and cause diabetes and obesity. One health expert said, "We're getting out of the habit of actual conversations."

People who work from home and who also live alone can go days without speaking to anyone. No wonder that the millennial generation, for whom technology accounts for an increasing percentage of their interaction, are reporting high levels of anxiety. Experts advise that you simply try and make as many social connections as you can, however brief. Make tea for someone at work, or chat to your neighbour. Or you could come to church. Every Sunday after the 10 am service we have refreshments in the hall where there are a number of people who will be pleased to chat with you.

If Church seems a step too far out of your comfort zone on the last Saturday of every month we have the Community Hub in the Church Hall from 10.30 to 12.30, on Monday evenings from 7.30 for a prompt 8pm start there's a very welcoming bingo evening and at Harvey Memorial Hall in George Green on the third Saturday of the month from 2pm to 3.30pm there is the Community library.

So don't be lonely come and have a chat.

Jill Bell

SHOC CHRISTMAS APPEAL

As usual Yvette is organising a Christmas appeal for Slough Homeless Our Concern. The charity continues to care for about 40 individuals with home comforts including hot food and drinks, access to shower and laundry facilities within a safe secure and non judgemental environment.



This year SHOC have asked for the following :-

Phone Chargers
Shower Gel
Shampoo

Coffee
Tea
UHT milk.

We also would like to prepare the usual Christmas gift bags/boxes containing

Pants (medium)



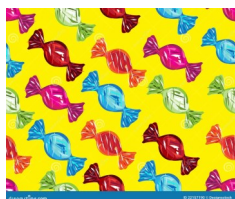
Gloves



Socks



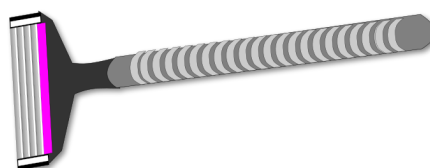
Sweets



Biscuits



Toothbrushes
And
Toothpaste



Disposable Razors

Most of SHOC's clients are men but there are a few women.
For further details please contact Yvette.

Bistro Style Café with outdoor area
at The Community Centre
Gerrards Cross
8 East Common, Gerrards Cross.
SL9 7 AD
 Delicious dishes Licensed Bar



Now Open 7 days per week
9-10 weekdays
Sat 9 - 11.30
and Sun 10-4

Freshly cooked food at reasonable prices
 Specials Board changes daily
 Vegetarian and Vegan options
 Dogs welcome
 Daytime special events catered for.



"Given the state of our heating system, you'd think the vicar would be all for it!"

THE PET STORE

"Your local pet supply store"

We supply and cater for:
 Dogs, **Cats**, Birds, **Rabbits**,
 Fish, **Guinea Pigs**, Hamsters,
 Horses, Foxes, **Ducks**, Swans,
 Badgers, chickens and many more ...

Under New Management

Mon - Sat: 9am - 5pm
Sun: 10am - 4pm

Call us: 01753648745 / 0792755681
 Email us: thepetstore.enquiries@gmail.com

Find us on Instagram - thepetstoreuk
 Find us on Facebook - @Berkshirepetsupplies

Pinewood Nurseries
Wexham Street, Stoke Poges, Slough
SL3 6NB

WEXHAM POST OFFICE
&
GENERAL STORES
 (Now with an off licence)
 Tel: 01753 526284

Wexham Road,
 SL2 4HE
 Near the Hospital
 Roundabout



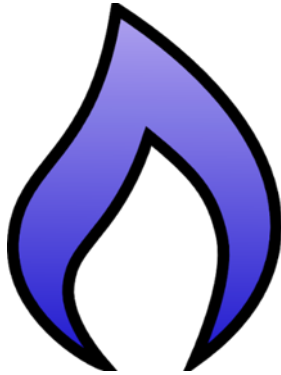
Groceries, Bread, Milk, and Alcohol.

Opening Hours:
Monday-Friday 9.00 am – 7.00pm
Saturday - 9.00 am—6.00 pm
Sunday - closed

Housego Heating Ltd.

Repair service and installation
on natural gas and l.p.g.
appliances.

30 years in the gas industry.



Contact
Paul Housego
on
07960571484.



We so enjoyed the fireworks display,
can we do it again at New Year?

TRANSWORLD 2000 Worldwide Freight Distribution



**Falcon House
Central Way
Feltham
TW14 0UQ**

**Telephone 020 3589 8164
Fax 020 3589 8161**

Smile Lines from Parish Pump Died in the services

Little Alex was staring up at the large brass plaque that hung on the side wall of the church. The plaque was covered with names, and it seemed to fascinate the seven-year-old. "All those names," he said to the minister. "Who are they?"

"Well, they were people who used to go to this church," explained the minister. "This is a memorial to all the young men and women who died in the services."



H.J. Newman

Funeral Directors



We've changed our name
Newman & Son is now trading
as **H.J. Newman** the same
family, the same friendly service...
just a new name.

Here for **you** when
you need us the **most**



01753 524286

www.hjnewman.co.uk



180 Stoke Road, Slough, SL2 5AS

E Sargeant & Son

Established since 1712

FUNERAL DIRECTORS AND MONUMENTAL MASONS

A family orientated business which offers a traditional and
caring service with attention to detail

For immediate personal assistance, please call

01753 520081

40 Church Street, Slough SL1 1PJ

01753 865982

61 St Leonards Road, Windsor SL4 3BX

01628 783738

13 The Colonnade, Maidenhead SL6 1QL



Providers of the Perfect Choice Funeral Plan



High Wycombe

891 London Road

Tel: 01494 472572

Slough

273 Farnham Road

Tel: 01753 535556

Marlow

21-23 Little Marlow Road

Tel: 01628 898866

Gerrards Cross

38 Oak End Way

Tel: 01753 891892



Beaconsfield

32 Gregories Road

Tel: 01494 685000

Head Office Flackwell Heath 24 White Pit Lane Tel: 01494 952288

ARNOLD FUNERAL SERVICE

INDEPENDENT FAMILY FUNERAL DIRECTORS

6 Generations of Service in the Community

Traditional, Alternative & Green Funerals ~ Pre-Payment Plans ~ Stonemasonry ~ Floristry

24 Hour Service

